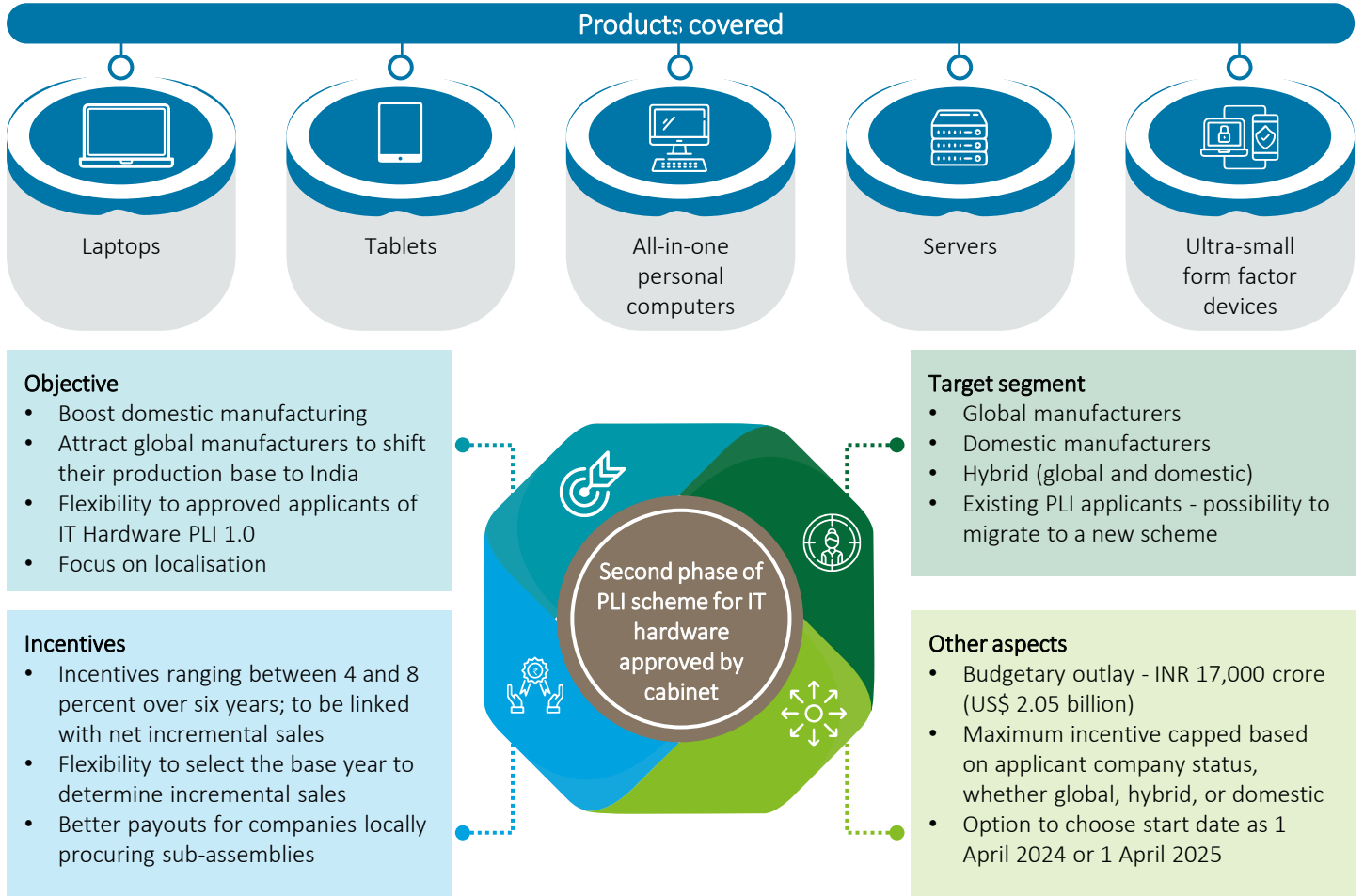


# PLI scheme for IT hardware 2.0

# IT hardware PLI 2.0 - Improved incentive payouts, longer tenure, flexible domestic sourcing norms



## Eligibility criteria

Minimum investment threshold	
Applicant	Expected investment threshold
Global companies	INR 500 crore (US\$61 million)
Hybrid companies (new category)	INR 250 crore (US\$30 million)
Domestic companies	INR 20 crore (US\$2.4 million)

- Flexibility expected in year-on-year investment criteria
- Component manufacturer's investment may be included and considered as the applicant's investment

**Sales threshold: Exports + domestic (per IT hardware PLI 1.0)**

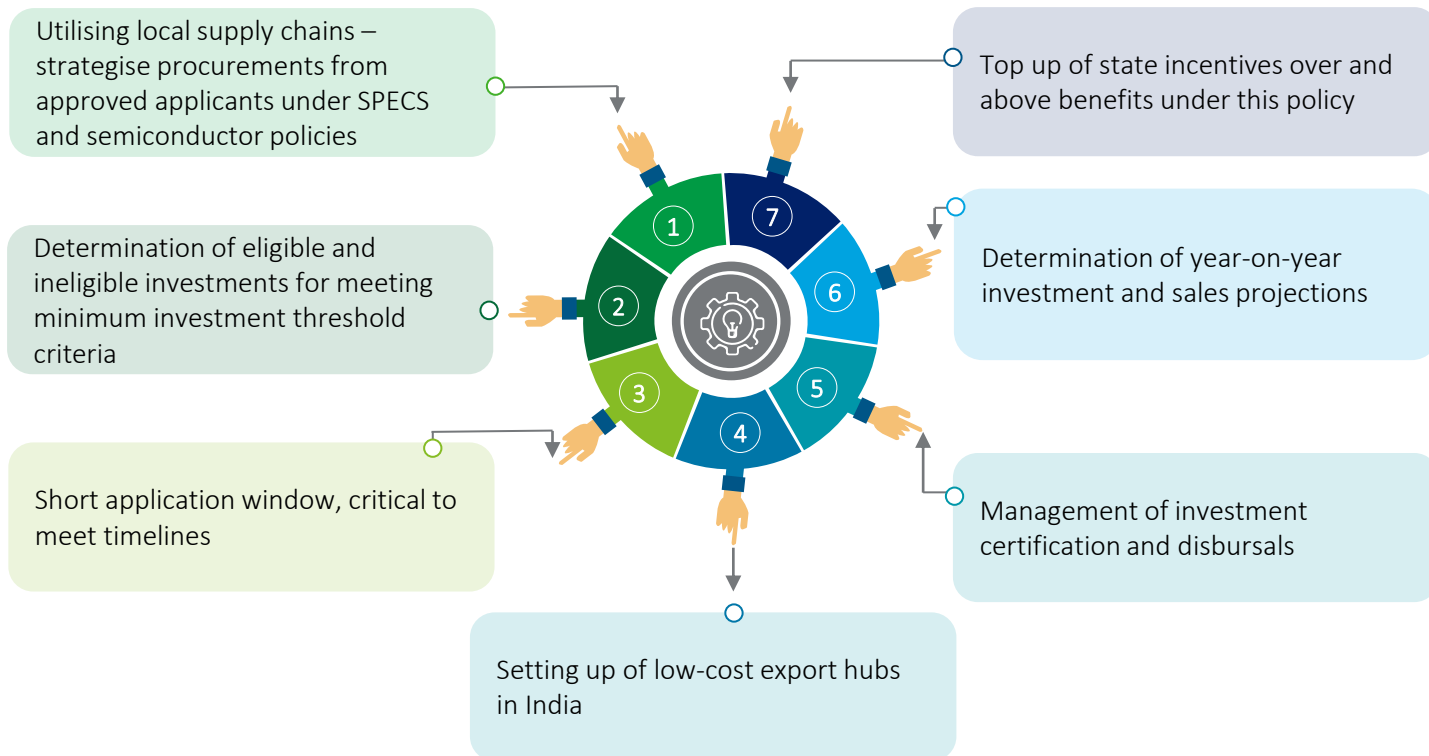
- Global companies – INR 10,000 crore (US\$1.21 billion)
- Domestic companies – INR 300 crore (US\$36 million)

**Domestic value addition**

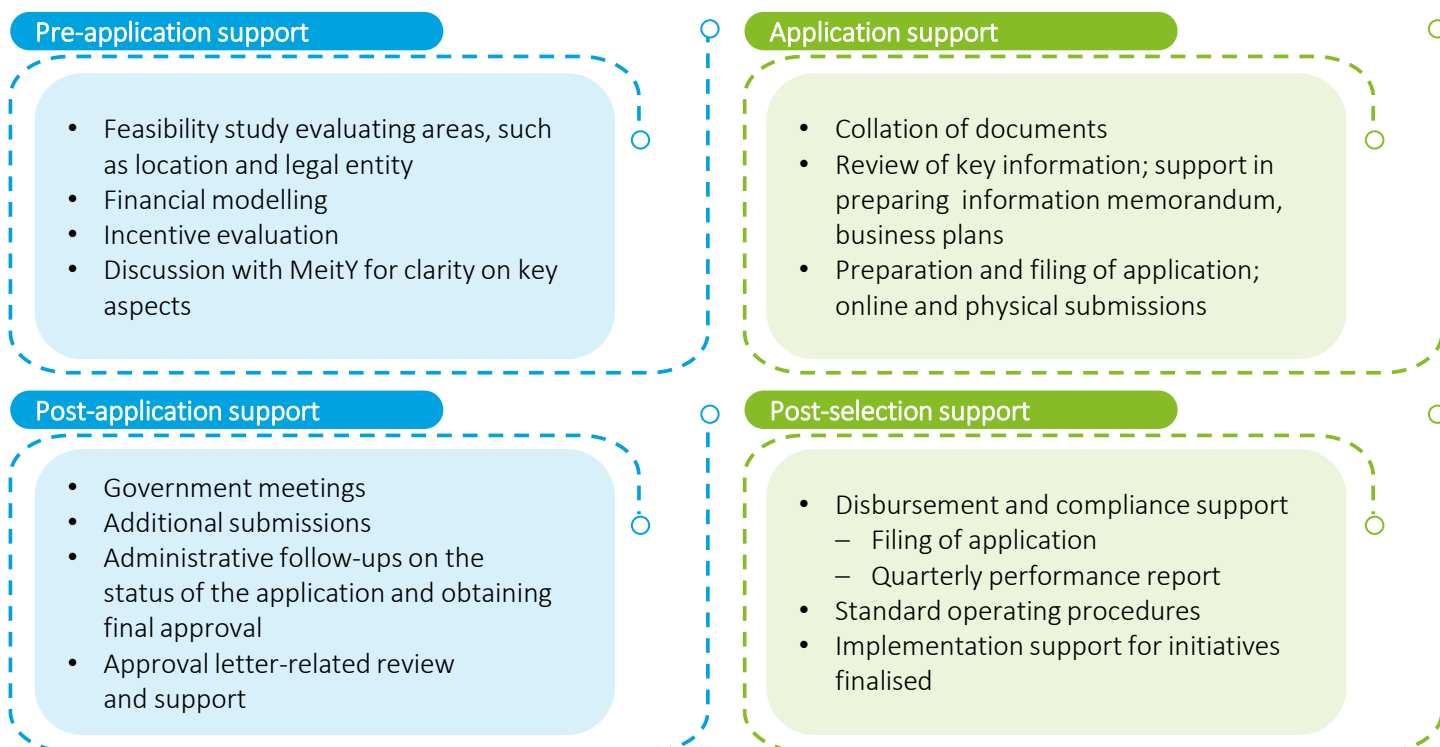
New schedule for domestic value addition criteria likely to be prescribed under the policy

Companies are expected to have flexibility under the new scheme for selecting localisation components

## Other key parameters for consideration



## Deloitte support areas





Deloitte refers to one or more of Deloitte Touche Tohmatsu Limited, a UK private company limited by guarantee (“DTTL”), its network of member firms, and their related entities. DTTL and each of its member firms are legally separate and independent entities. DTTL (also referred to as “Deloitte Global”) does not provide services to clients. Please see [www.deloitte.com/about](http://www.deloitte.com/about) for a more detailed description of DTTL and its member firms.

This material is prepared by Deloitte Touche Tohmatsu India LLP (DTTILLP). This material (including any information contained in it) is intended to provide general information on a particular subject(s) and is not an exhaustive treatment of such subject(s) or a substitute to obtaining professional services or advice. This material may contain information sourced from publicly available information or other third party sources. DTTILLP does not independently verify any such sources and is not responsible for any loss whatsoever caused due to reliance placed on information sourced from such sources. None of DTTILLP, Deloitte Touche Tohmatsu Limited, its member firms, or their related entities (collectively, the “Deloitte Network”) is, by means of this material, rendering any kind of investment, legal or other professional advice or services. You should seek specific advice of the relevant professional(s) for these kind of services. This material or information is not intended to be relied upon as the sole basis for any decision which may affect you or your business. Before making any decision or taking any action that might affect your personal finances or business, you should consult a qualified professional adviser.

No entity in the Deloitte Network shall be responsible for any loss whatsoever sustained by any person or entity by reason of access to, use of or reliance on, this material. By using this material or any information contained in it, the user accepts this entire notice and terms of use.

© 2023 Deloitte Touche Tohmatsu India LLP. Member of Deloitte Touche Tohmatsu Limited